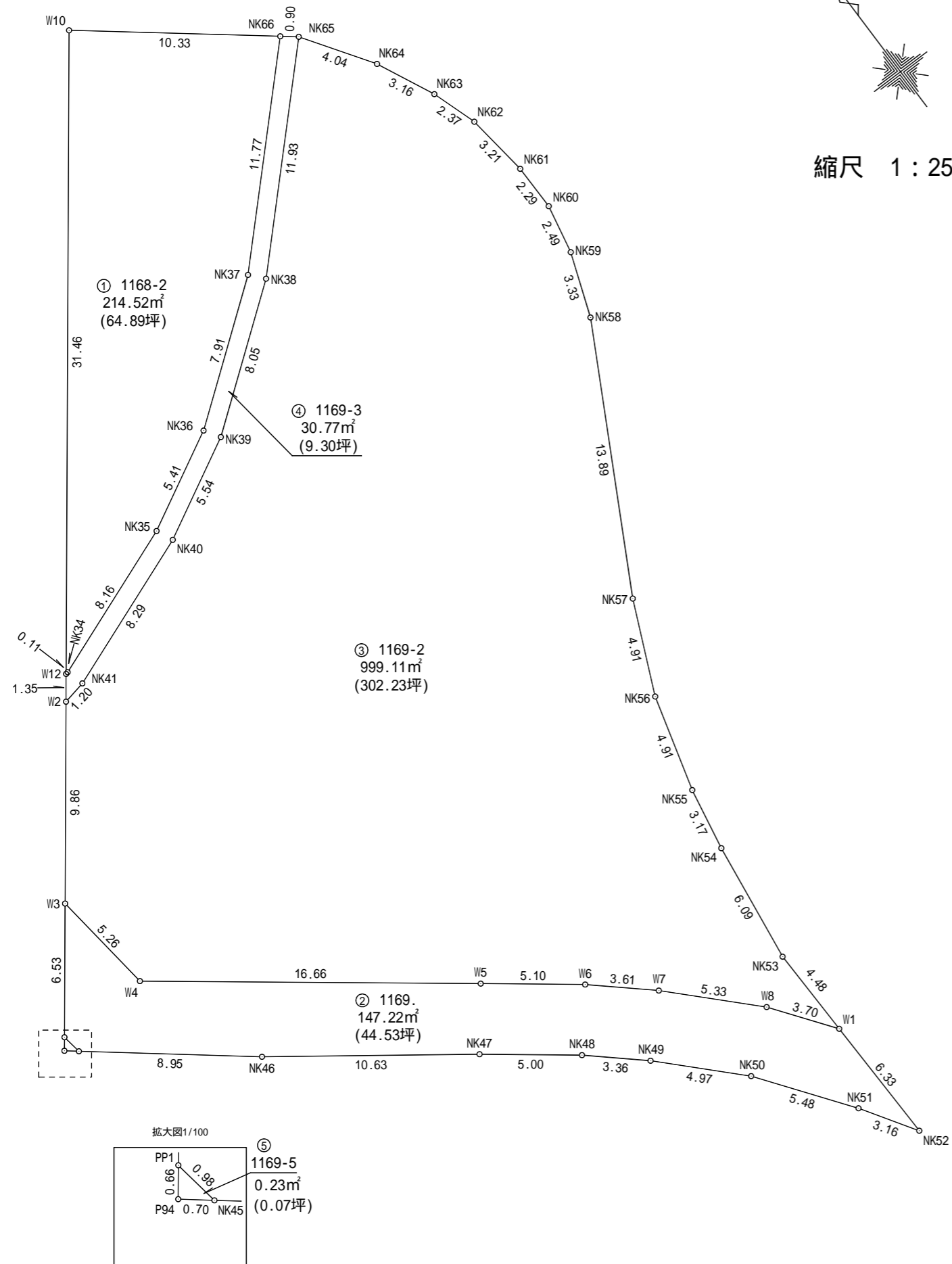


求積表

地番	① 1168-2			
NO	X _n	Y _n	Y _{n+1} -Y _{n-1}	X _n · (Y _{n+1} -Y _{n-1})
NK66	745.186	1236.470	-0.208	-154.998688
NK37	736.819	1228.189	-14.596	-10754.610124
NK36	732.049	1221.874	-11.103	-8127.940047
NK35	729.512	1217.086	-12.418	-9059.080016
NK34	726.615	1209.456	-7.738	-5622.546870
W12	726.594	1209.348	18.941	13762.416954
W10	751.634	1228.397	27.122	20385.817348
合計				429.058557
合計面積				214.5292785
地積				214.52 m ²

地番	② 1169.			
NO	X _n	Y _n	Y _{n+1} -Y _{n-1}	X _n · (Y _{n+1} -Y _{n-1})
W1	689.991	1229.097	-2.321	-1601.469111
W8	692.973	1226.903	-5.921	-4103.093133
W7	696.791	1223.176	-6.424	-4476.185384
W6	699.193	1220.479	-6.750	-4719.552750
W5	702.302	1216.426	-17.286	-12139.992372
W4	712.430	1203.193	-13.874	-9884.253820
W3	717.660	1202.552	-4.599	-3300.518340
PP1	712.457	1198.594	-3.807	-2712.323799
NK45	711.485	1198.745	7.139	5079.291415
NK46	705.882	1205.733	15.559	10982.818038
NK47	699.580	1214.304	12.544	8775.531520
NK48	696.531	1218.277	6.486	4517.700066
NK49	694.294	1220.790	5.988	4157.432472
NK50	690.734	1224.265	6.722	4643.113948
NK51	686.319	1227.512	4.959	3403.455921
NK52	683.655	1229.224	1.585	1083.593175
合計				-294.452154
合計面積				147.2260770
地積				147.22 m ²

地番	③ 1169-2			
NO	X _n	Y _n	Y _{n+1} -Y _{n-1}	X _n · (Y _{n+1} -Y _{n-1})
W1	689.991	1229.097	-2.104	-1451.741064
W8	692.973	1226.903	-5.921	-4103.093133
W7	696.791	1223.176	-6.424	-4476.185384
W6	699.193	1220.479	-6.750	-4719.552750
W5	702.302	1216.426	-17.286	-12139.992372
W4	712.430	1203.193	-13.874	-9884.253820
W3	717.660	1202.552	5.333	3827.280780
W2	725.514	1208.526	7.153	5189.601642
NK41	725.746	1209.705	8.932	6482.363272
NK40	728.691	1217.458	12.654	9220.855914
NK39	731.288	1222.359	11.325	8281.836600
NK38	736.140	1228.783	14.818	10908.122520
NK65	744.621	1237.177	10.651	7930.958271
NK64	741.260	1239.434	3.608	2674.466080
NK63	738.393	1240.785	2.100	1550.625300
NK62	736.141	1241.534	1.155	850.242855
NK61	732.952	1241.940	0.421	308.572792
NK60	730.653	1241.955	-0.478	-349.252134
NK59	728.207	1241.462	-1.645	-1197.900515
NK58	725.080	1240.310	-7.770	-5633.871600
NK57	712.860	1233.692	-8.623	-6146.991780
NK56	708.377	1231.687	-3.311	-2345.436247
NK55	703.635	1230.381	-1.881	-1323.537435
NK54	700.510	1229.806	-1.374	-962.500740
NK53	694.472	1229.007	-0.709	-492.380648
合計				1998.236404
合計面積				999.1182020
地積				999.11 m ²



地番	④ 1169-3			
NO	X_n	Y_n	$Y_{n+1} - Y_{n-1}$	$X_n \cdot (Y_{n+1} - Y_{n-1})$
NK65	744.621	1237.177	-7.687	-5723.901627
NK38	736.140	1228.783	-14.818	-10908.122520
NK39	731.288	1222.359	-11.325	-8281.836600
NK40	728.691	1217.458	-12.654	-9220.855914
NK41	725.746	1209.705	-8.932	-6482.363272
W2	725.514	1208.526	-0.357	-259.008498
W12	726.594	1209.348	0.930	675.732420
NK34	726.615	1209.456	7.738	5622.546870
NK35	729.512	1217.086	12.418	9059.080016
NK36	732.049	1221.874	11.103	8127.940047
NK37	736.819	1228.189	14.596	10754.610124
NK66	745.186	1236.470	8.988	6697.731768
合計				61.552814
合計面積				30.7764070
地積				30.77 m ²

地番	⑤ 1169-5			
NO	X_n	Y_n	$Y_{n+1} - Y_{n-1}$	$X_n \cdot (Y_{n+1} - Y_{n-1})$
PP1	712.457	1198.594	-0.552	-393.276264
P94	711.930	1198.193	0.151	107.501430
NK45	711.485	1198.745	0.401	285.305485
合計				-0.469349
合計面積				0.2346745
地積				0.23 m ²

総合計面積	1391.8846390 m ²
-------	-----------------------------

地番	面積
① 1168-2	214.5292785 m ²
② 1169.	147.2260770 m ²
③ 1169-2	999.1182020 m ²
④ 1169-3	30.7764070 m ²
⑤ 1169-5	0.2346745 m ²